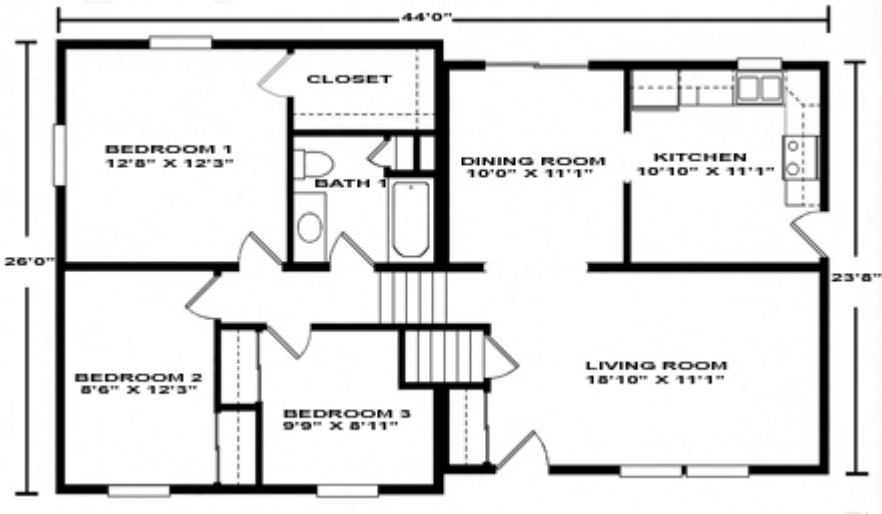


The Lancaster

Plan No. 401 1,093 Sq. Ft

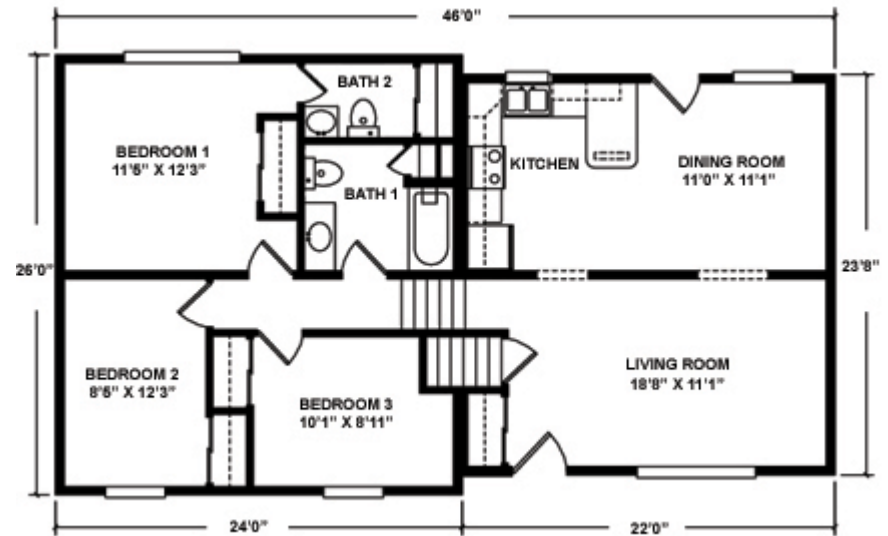
Spacious and inviting, this home features a large master bedroom, two additional bedrooms, full bath, formal dining room, and spacious living room.



The Lycoming

Plan No. 402 1,145 Sq. Ft

The growing family will find privacy and comfort in this expansive home with three bedrooms, one and a half baths, and a large living room area.



The Lawrence

Plan No. 403 1,291Sq. Ft

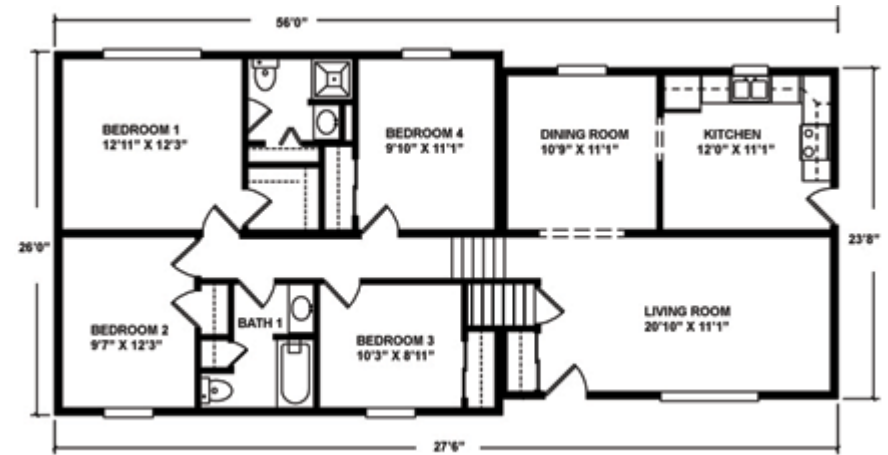
Spacious and welcoming, this home features a large master suite with private three quarter bath, two additional bedrooms, a full bath, formal dining room, and entry.



The Lebanon

Plan No. 404 1,400 Sq. Ft

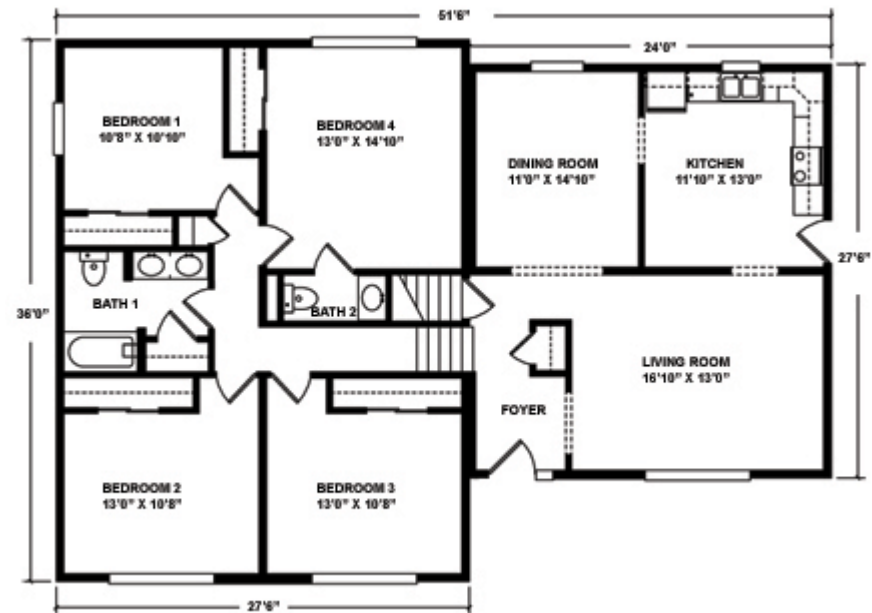
Comfortable, easy living with four bedrooms, one and three quarter baths, large kitchen, formal dining room, and a spacious living room.



The Hampton

Plan No. 405 1,650 Sq. Ft

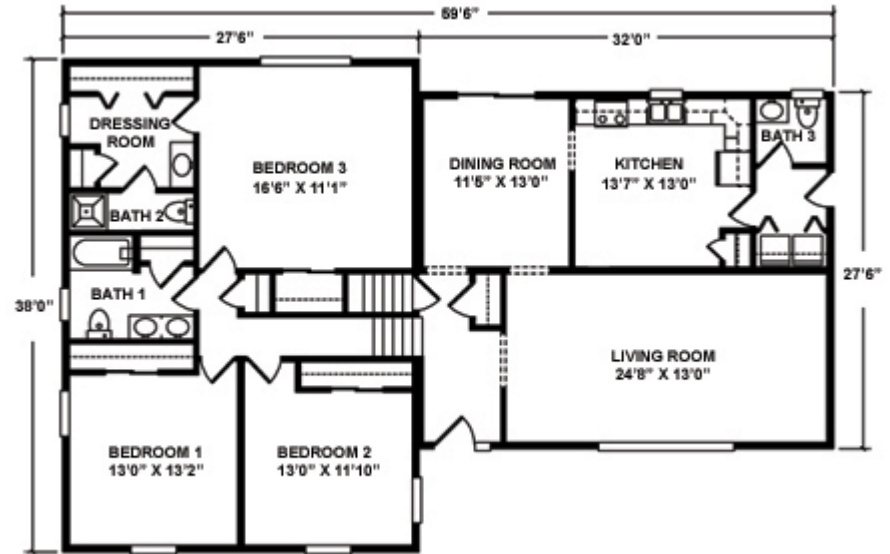
Perfect for the growing family, four bedrooms, one and a half baths, spacious kitchen, formal dining room, and warm, inviting foyer.



The Westfield

Plan No. 407 1,925 Sq. Ft

Beautifully appointed for grand living, featuring spacious master suite with dressing area and bath. Formal living and dining rooms encourage entertaining.



The Gulfport

Plan No. 408 2,200 Sq. Ft

Super amenities such as a large master suite with private bath and dressing room. Kitchen features a convenient breakfast / snack bar area, and adjoining family room.

